

iTero scan review and troubleshooting for the lab

Gain control, versatility,
and productivity with MyiTero.com



Disclosures



- Taking photos or recording any patient case is prohibited due to privacy laws.
- The statements, views, and opinions expressed in this program and related course materials are those of the speaker. Align Technology, Inc. may not endorse such statements, views, or opinions.
- Attendees are responsible for legal and regulatory compliance associated with any recommended actions, marketing and referral programs.
- Laws governing the practice of dentistry, including teledentistry and telehealth, will vary in each state or territory. Please consult your local laws or contact your local licensing board to determine the laws that apply to your practice.
- INVISALIGN, ITERO, and CLINCHECK, among others, are trademarks and/or service marks of Align Technology, Inc. or one of its subsidiaries or affiliated companies and may be registered in the U.S. and/or other countries.

Why are the iTero restorative tools important

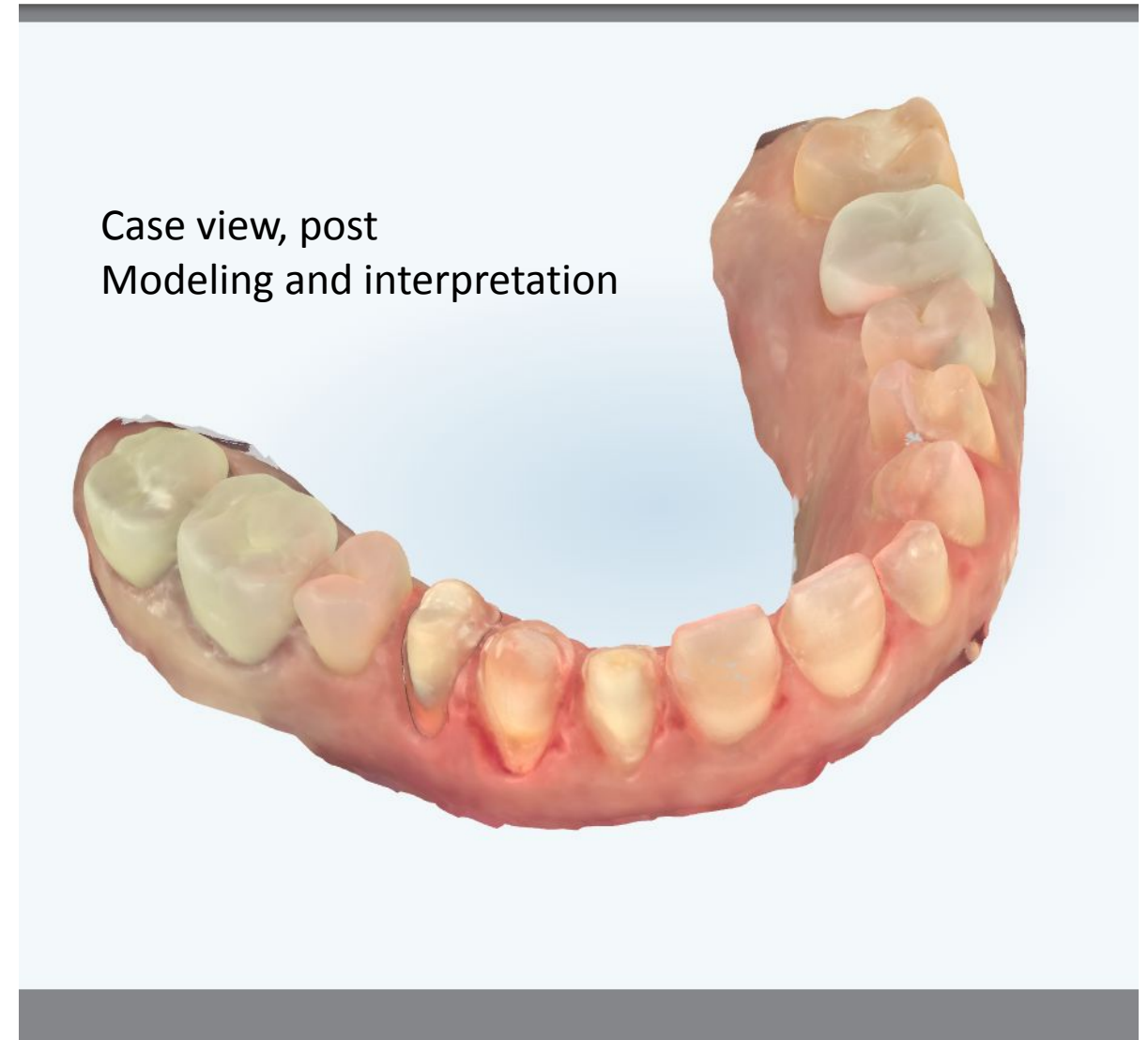
Prep separation tool

When your Dr. clicks on the prep separation tool from their scanner view screen, it will show them the defined area of each prep. It is important for each prep to have it's own space. If a portion of a prep is overlapping an adjacent prep, the Dr. must use the + and – tab on the tool to reduce the area or add to the area.

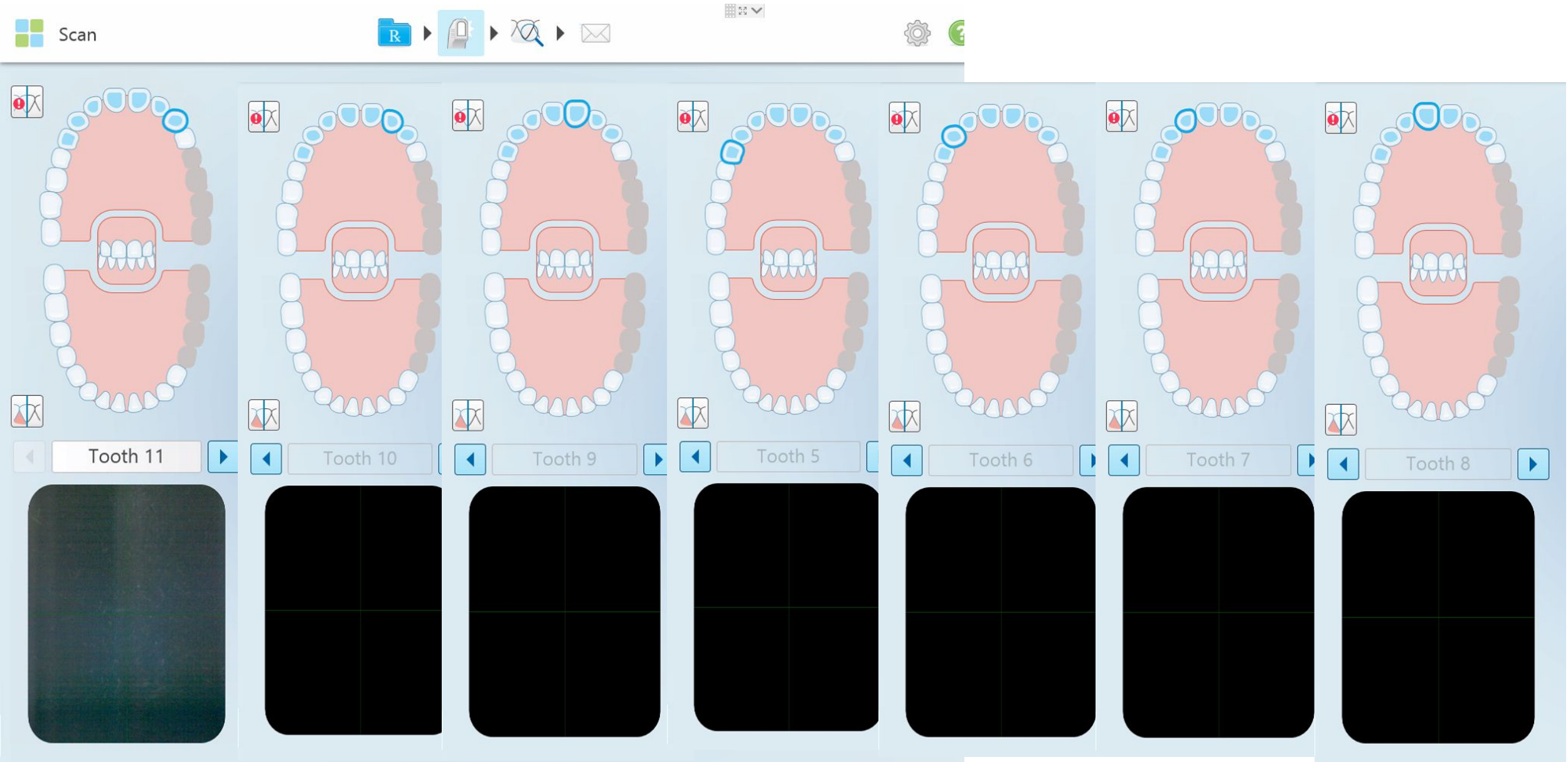


Prep separation lines-

If the lines are not corrected the lab view can be distorted and the case will need to be submitted to modeling for correction.

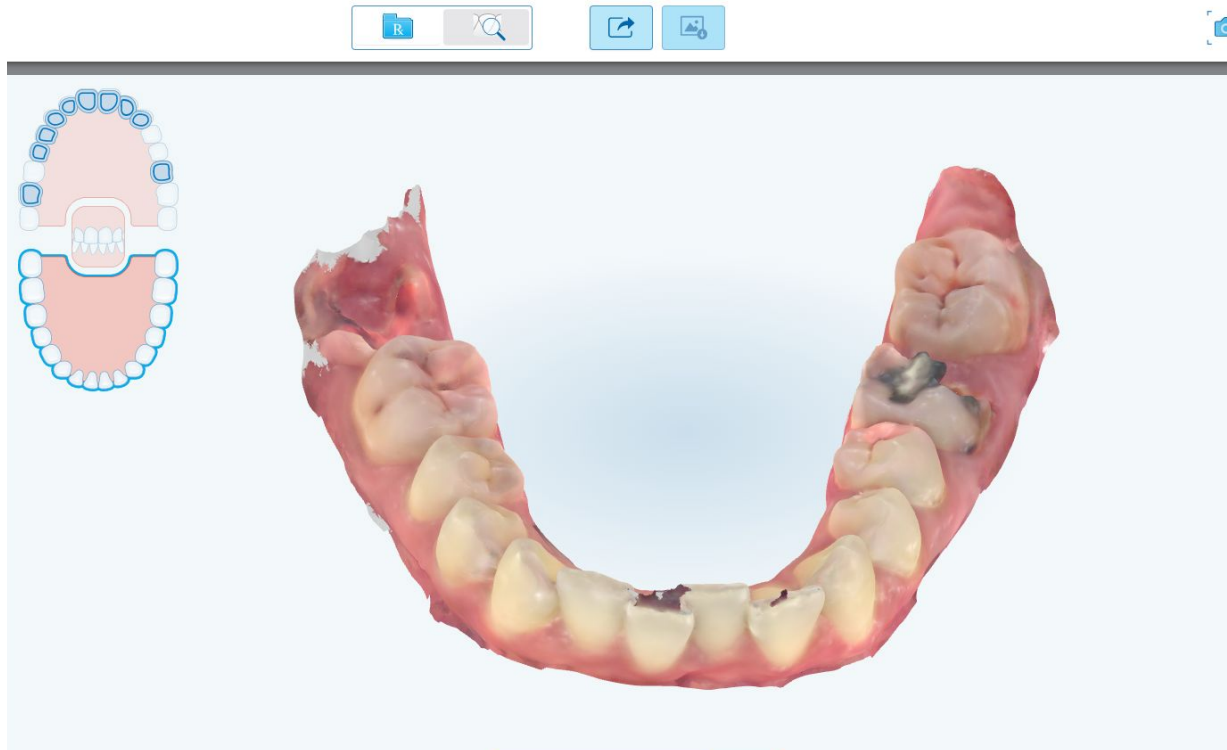


Scanning sequence is very important. The scanner will ask the Dr to move posterior to anterior, breaking at midline.



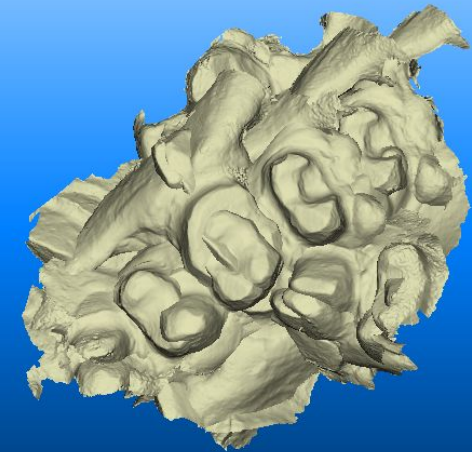
Scanning sequence

If scan is taken out of order the arch pieces will not stitch properly and case will have to be sent to modeling for correction.



Lab's view upon receipt. Upper arch is missing and it cannot be selected

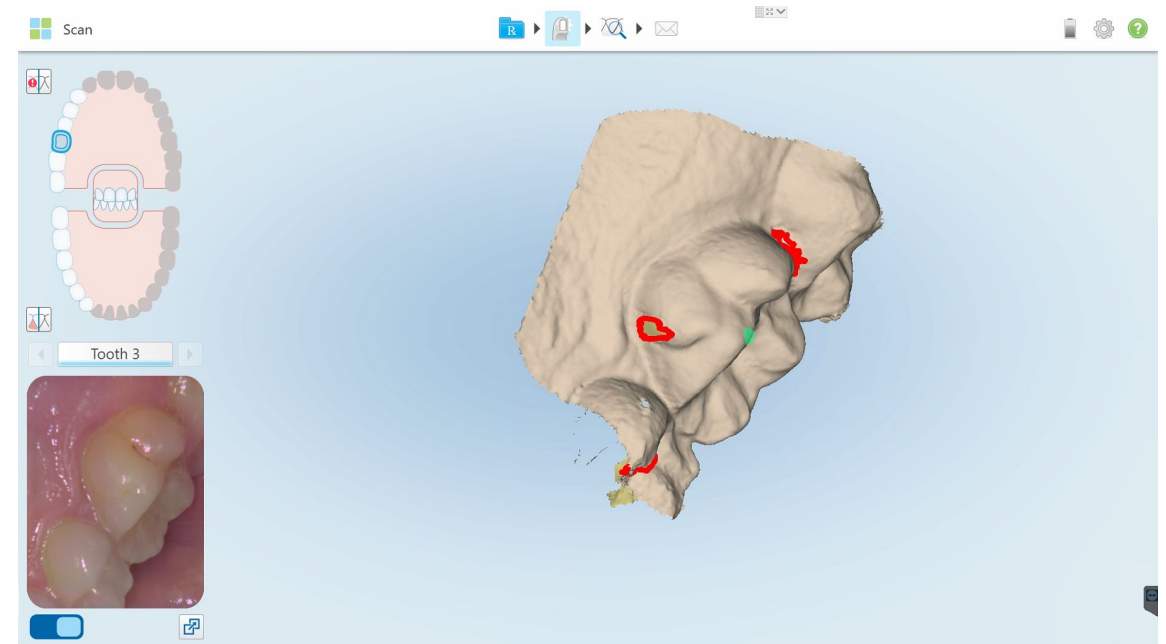
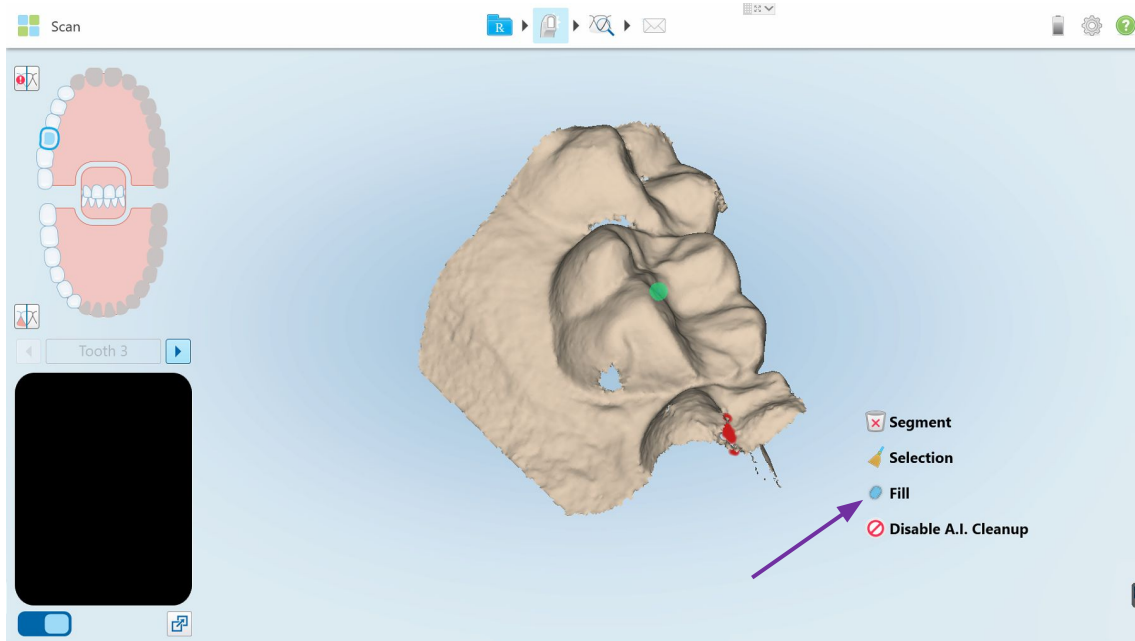
When opened with the iTero lab Software the upper arch was available but distorted



Over scanning concerns

It is important to capture the prep scan quickly and efficiently. We recommend that your Dr scans the prep for no longer than 7 to 9 seconds. If the entire prep was not captured in that amount of time the Dr will need to hold their finger down on the scanning screen and select the 'Fill tool'. This tool will allow the Dr to add additional information to the prep without over scanning. Over scanning may lead to changes on the prep as the Dr continues to scan, such as increased moisture and it may also cause overlap of excess scan information, leading to an unreadable scan at the lab.

Fill tool



An example of margin deterioration while scanning too long.

Scan at 5 seconds in



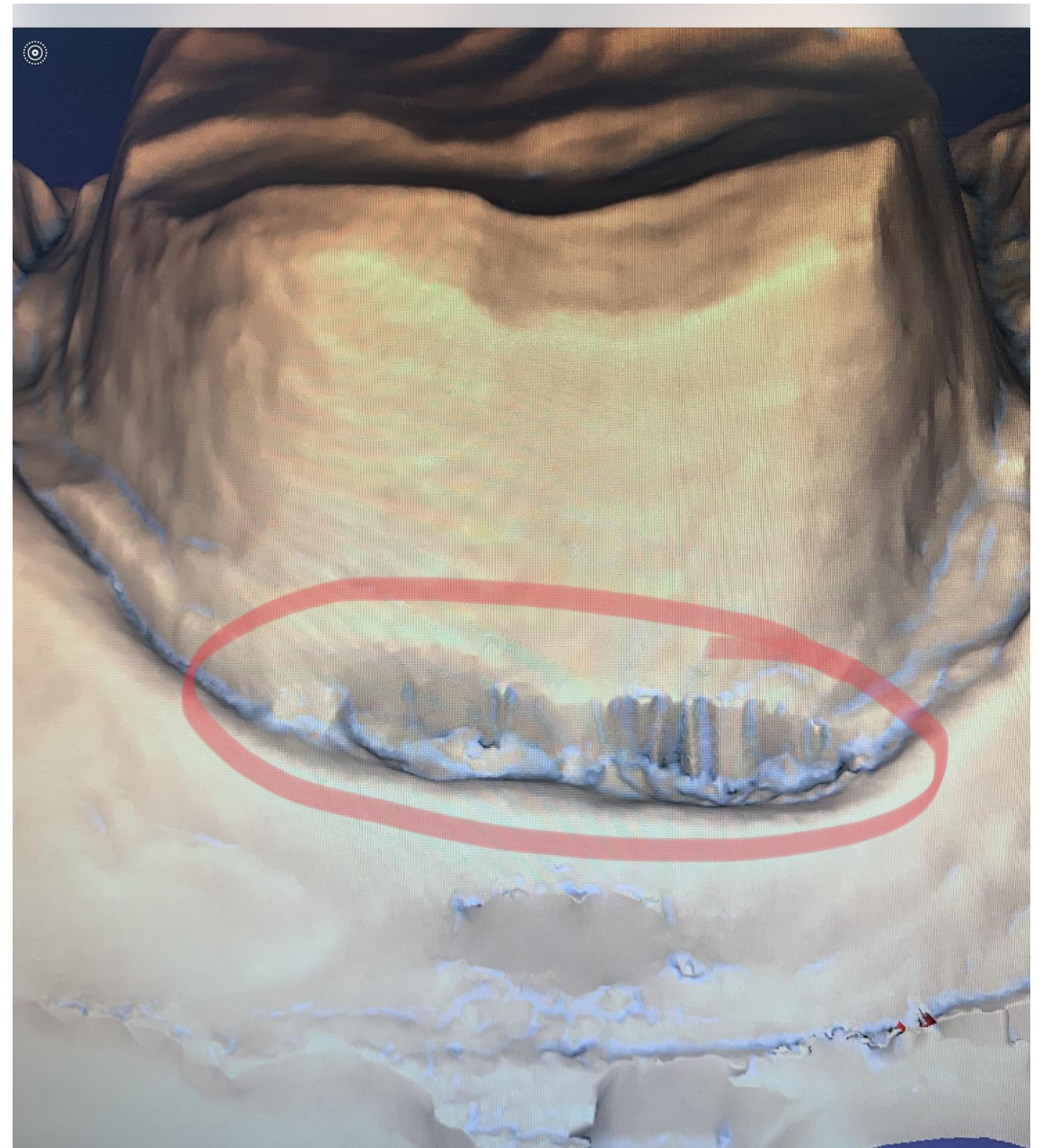
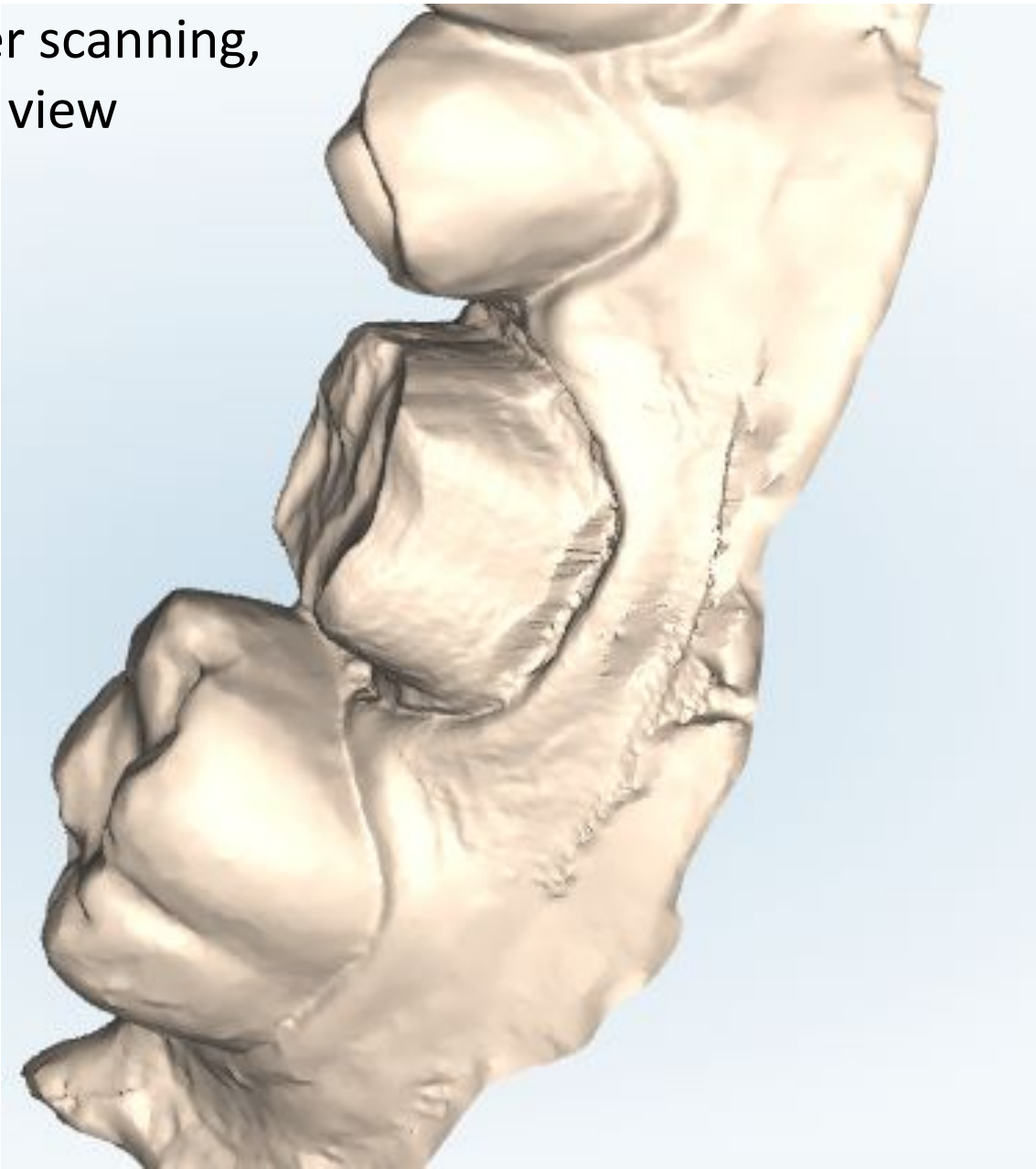
Clean margin

Scan at 13 seconds in

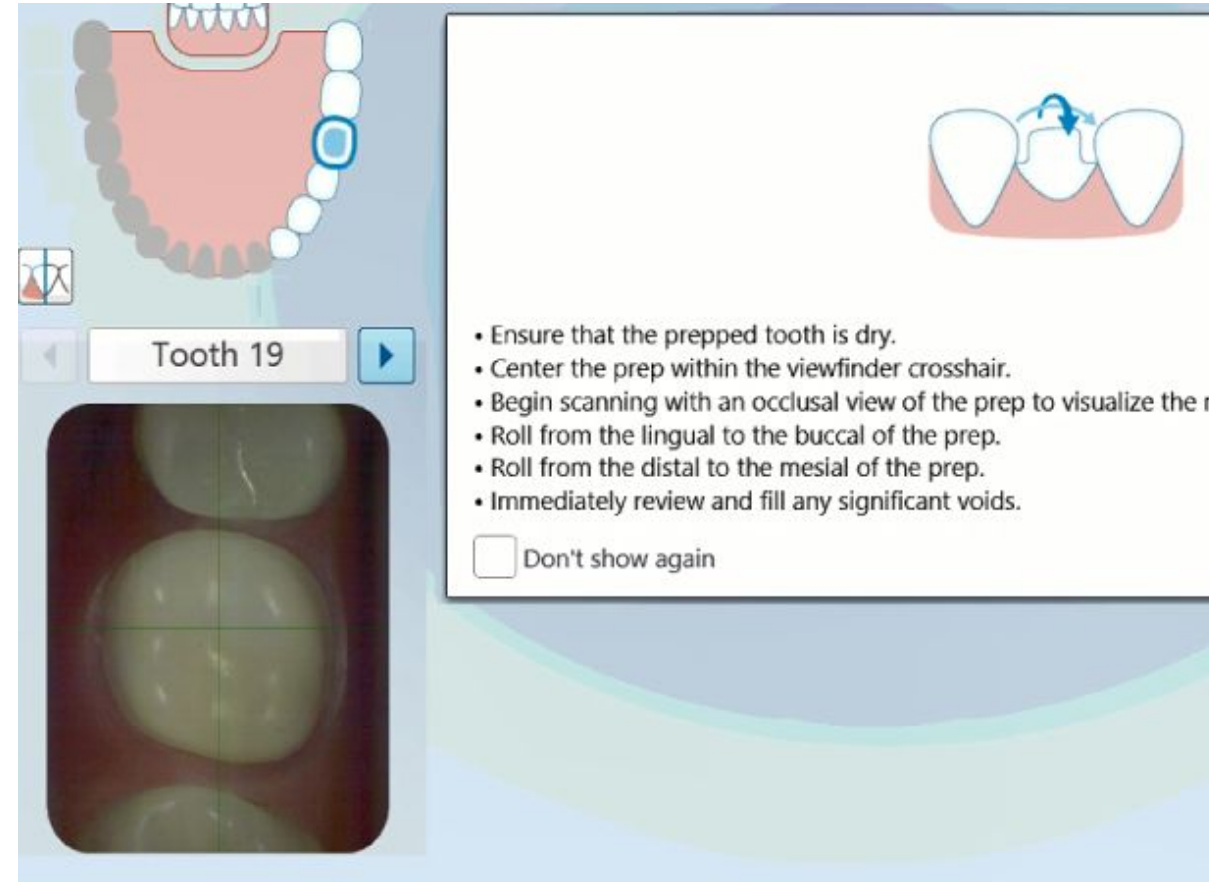


Moisture begins to obstruct margin

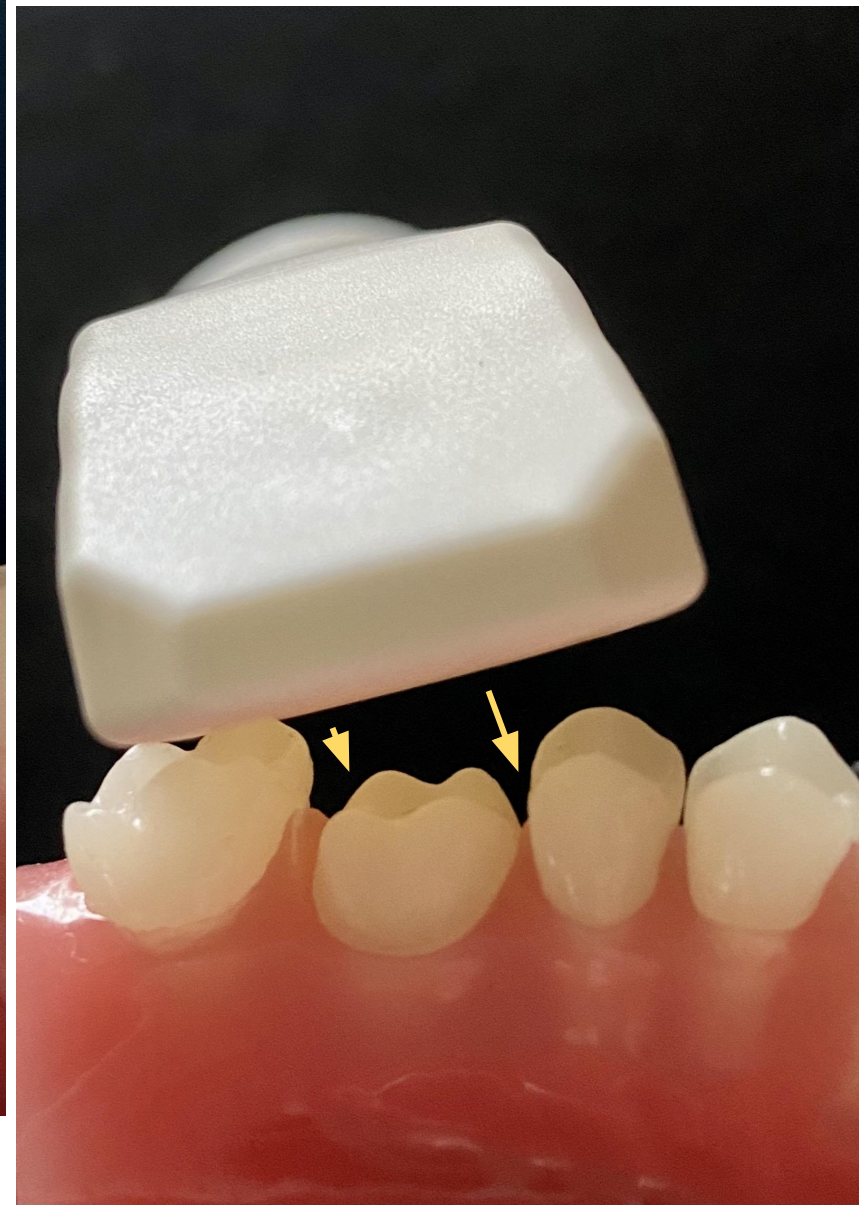
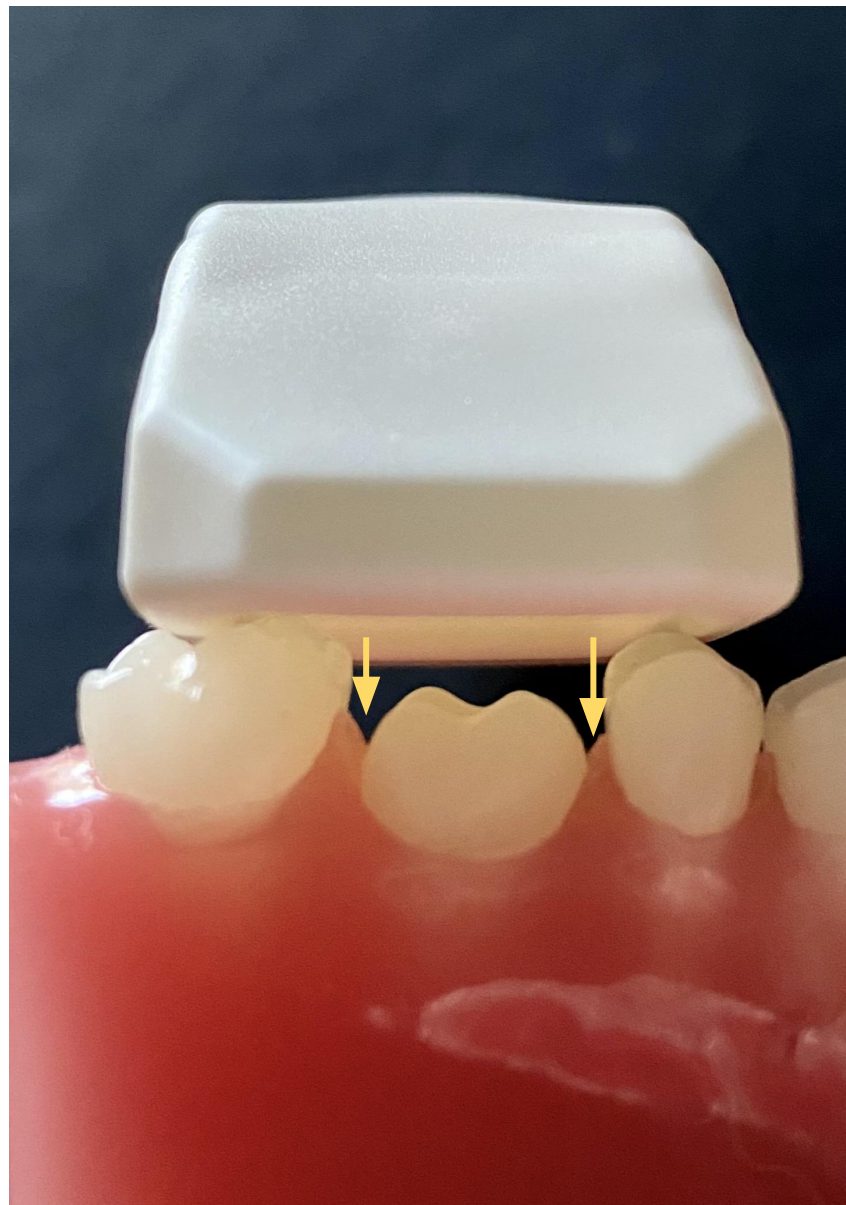
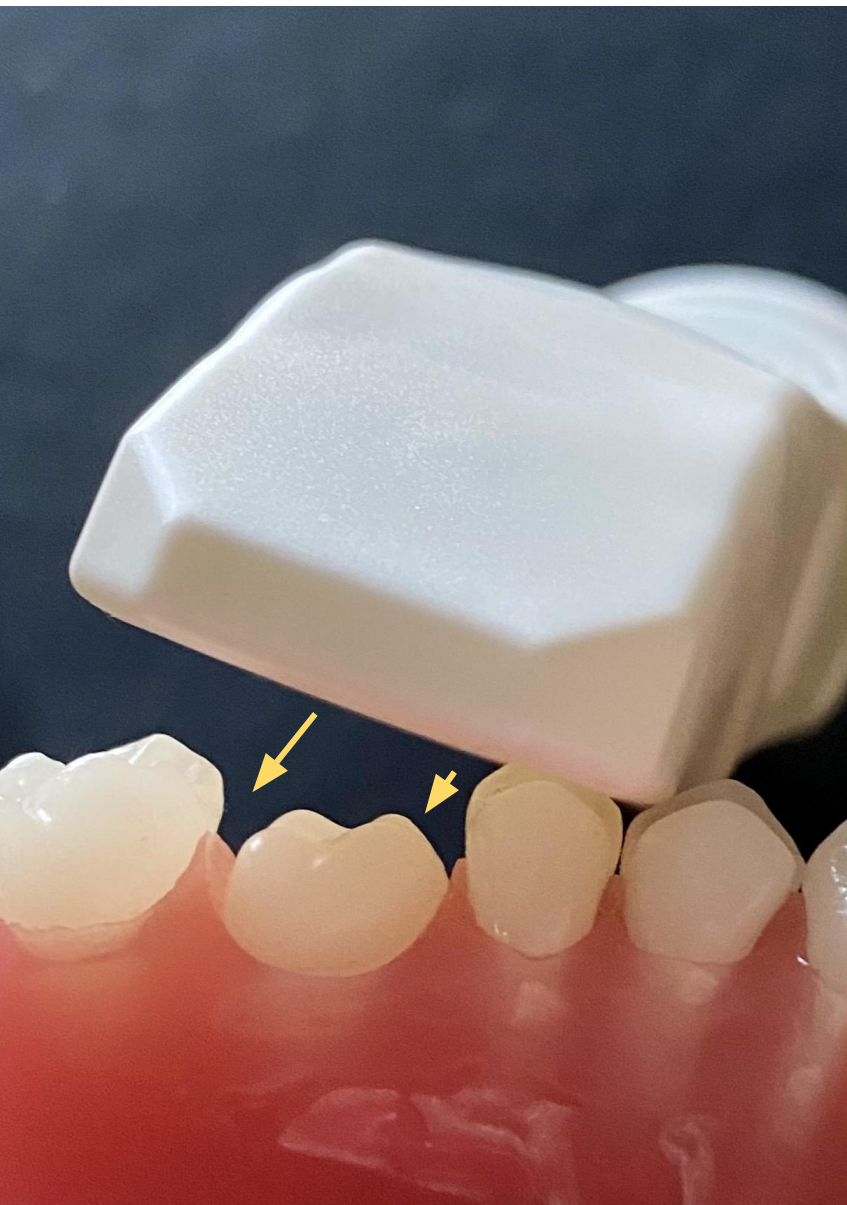
Over scanning,
Lab view



Angulation matters







Top angle vs side angle

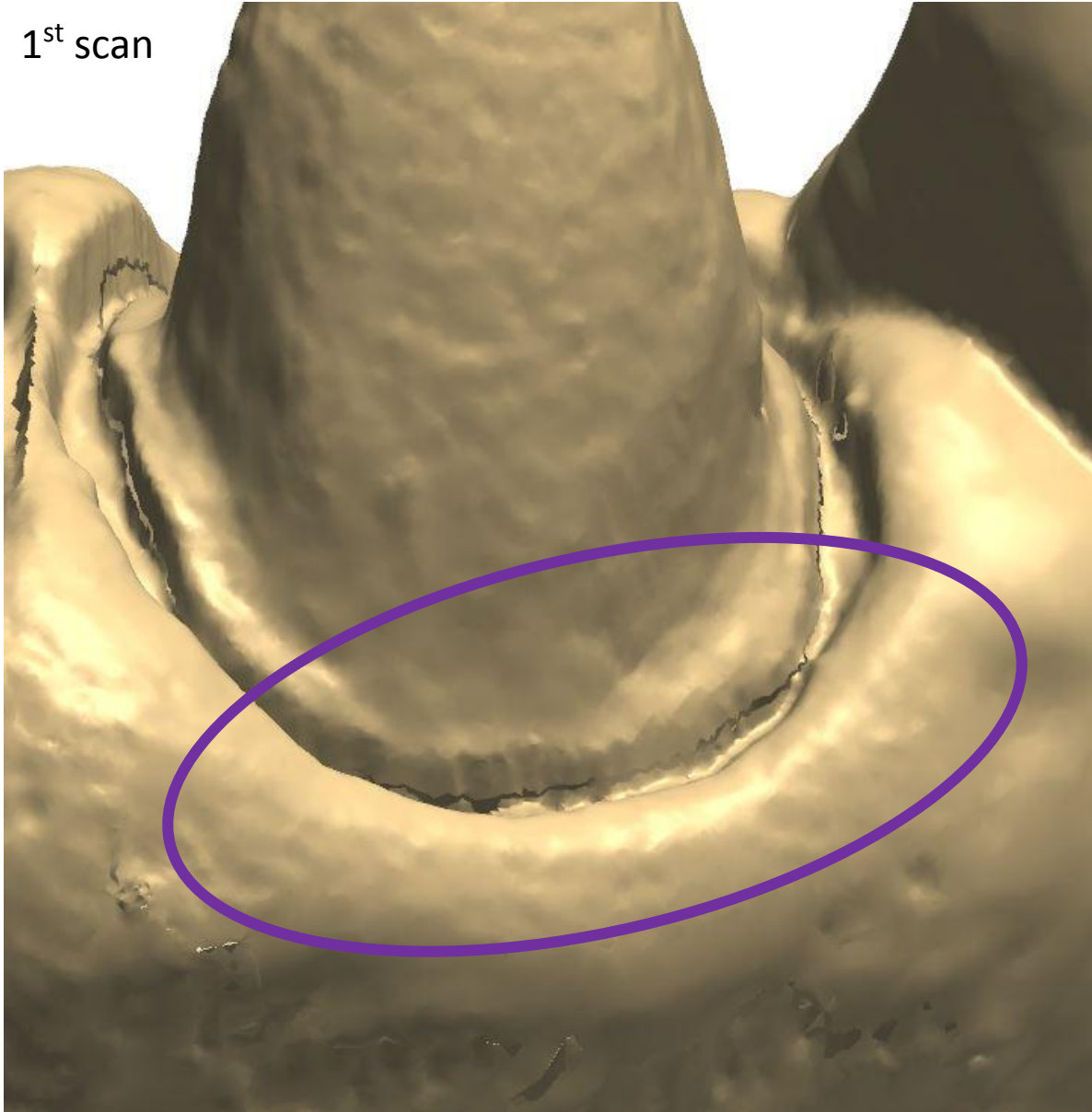


Don't 'selfie' your crowns

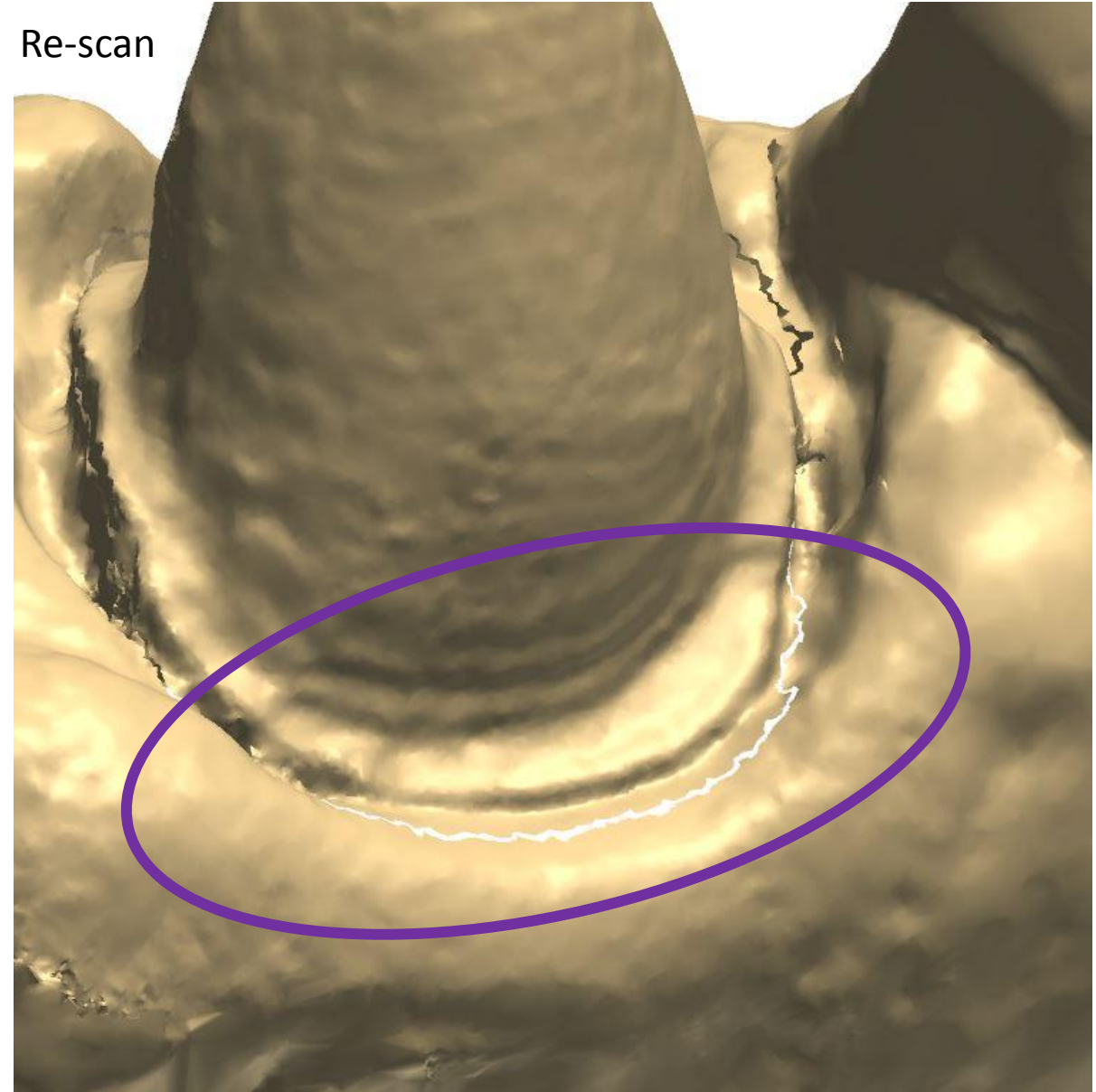


Blurred margin line based on inaccurate wand angulation

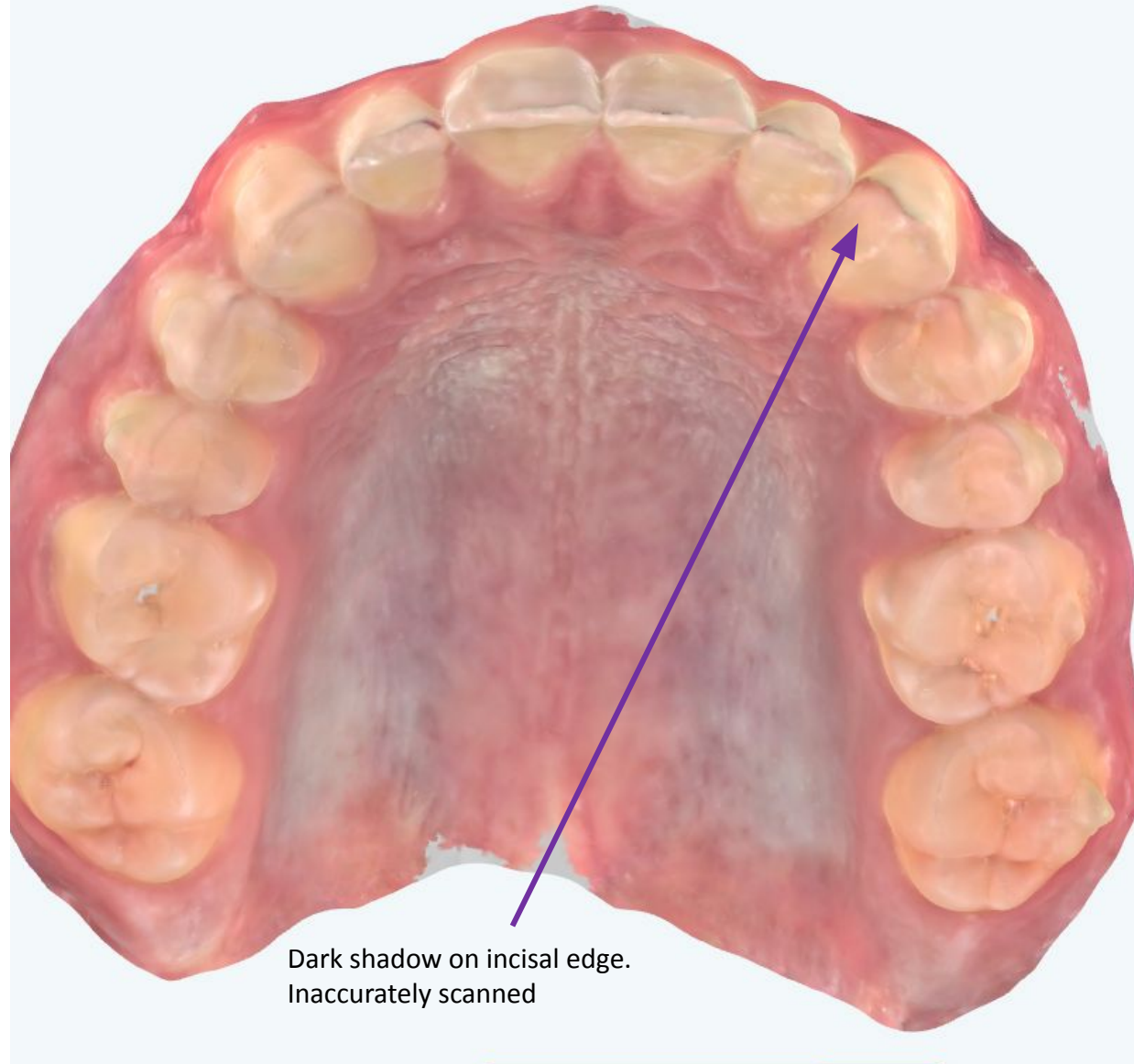
1st scan



Re-scan



Proper capture of the incisal edge



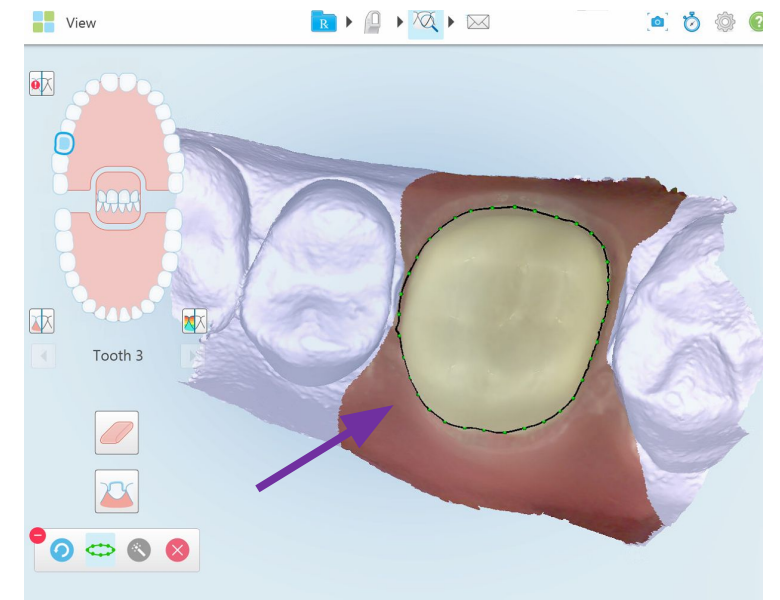
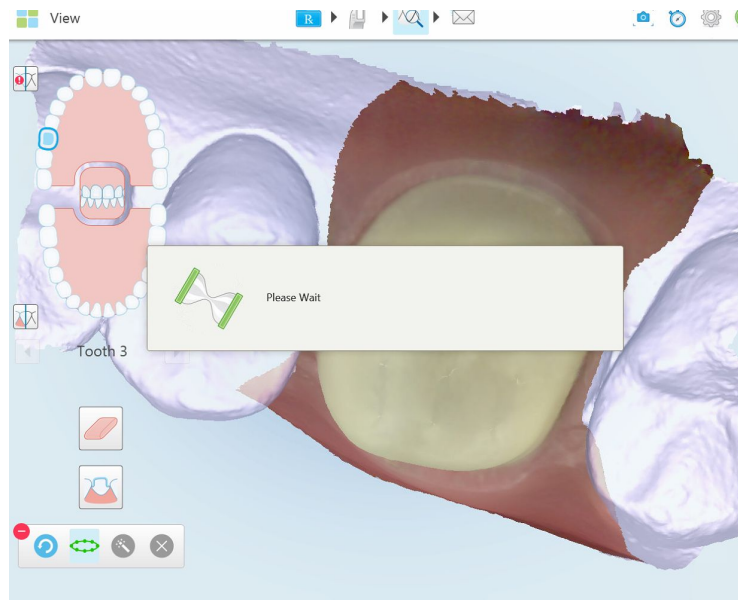
Smooth incisal edge.
Occlusal surface correctly captured



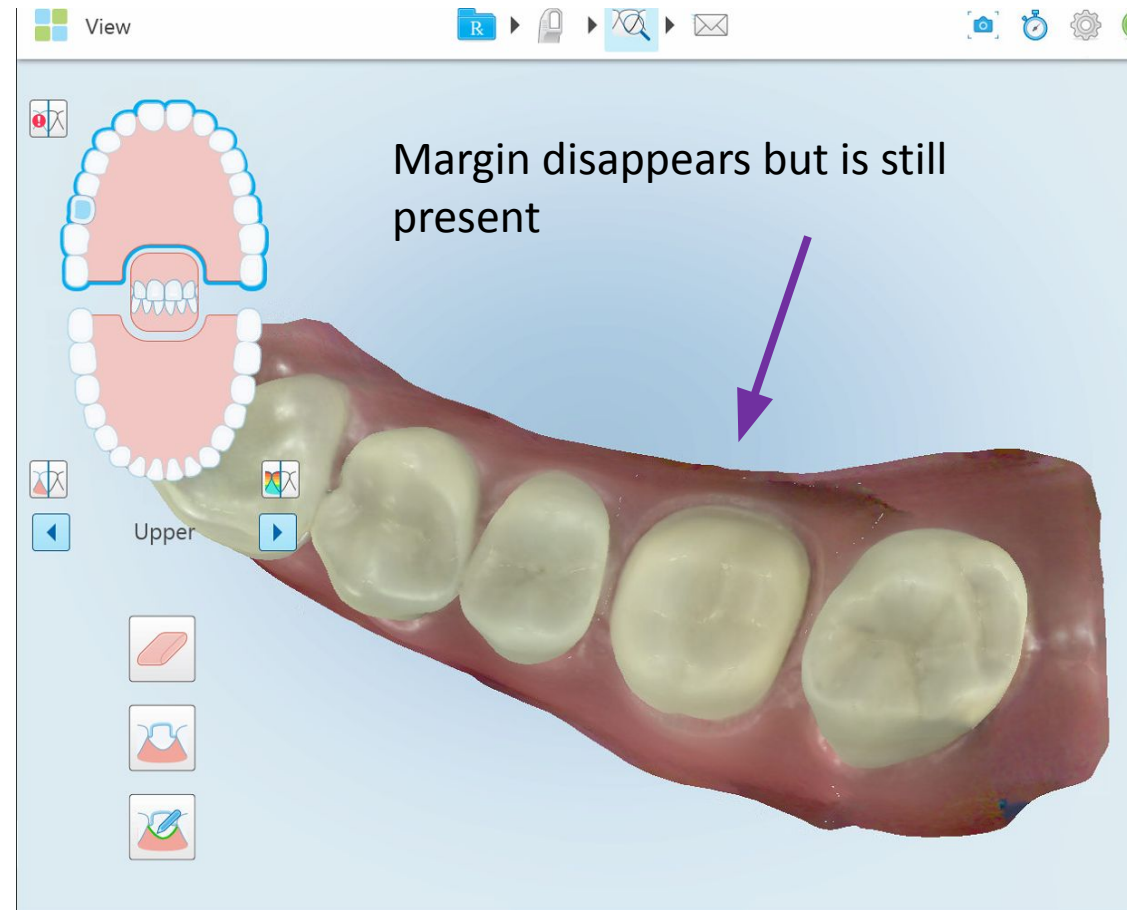
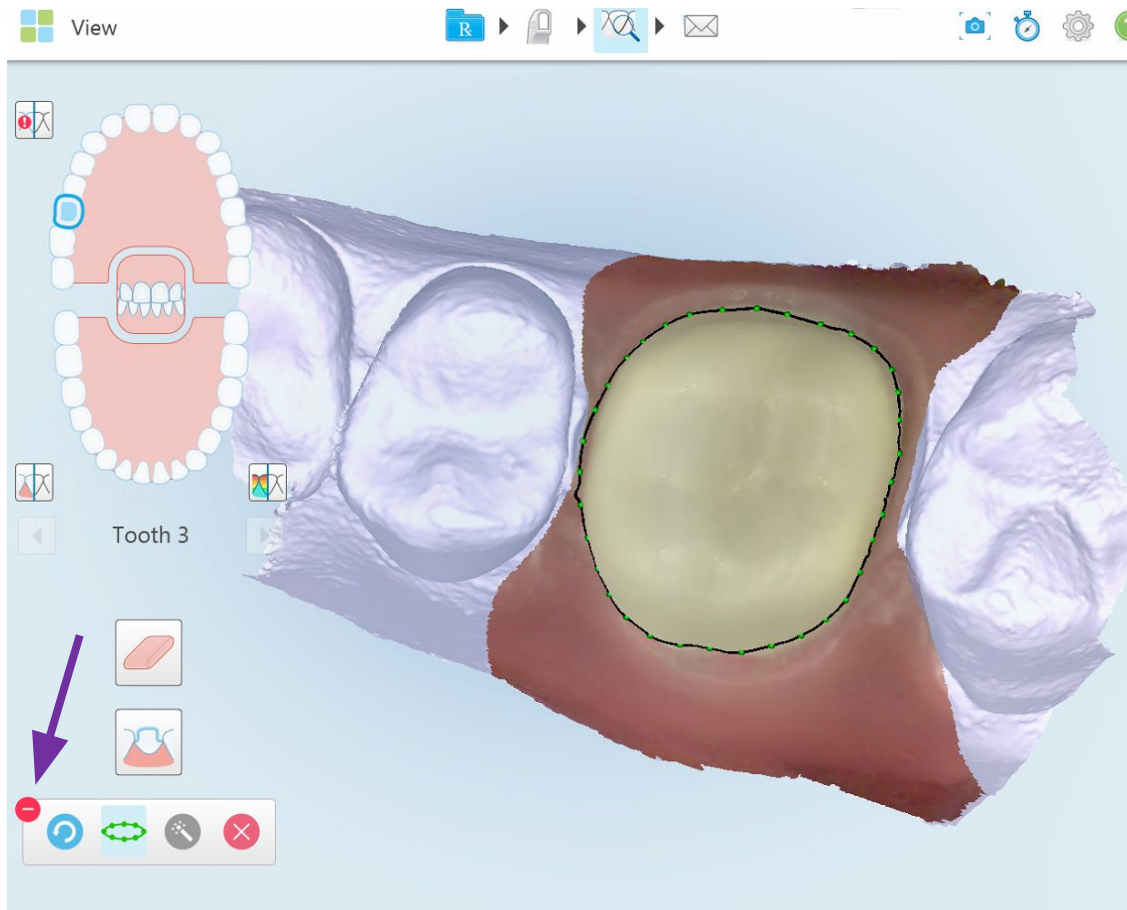
Margin marking tool, how to add and delete

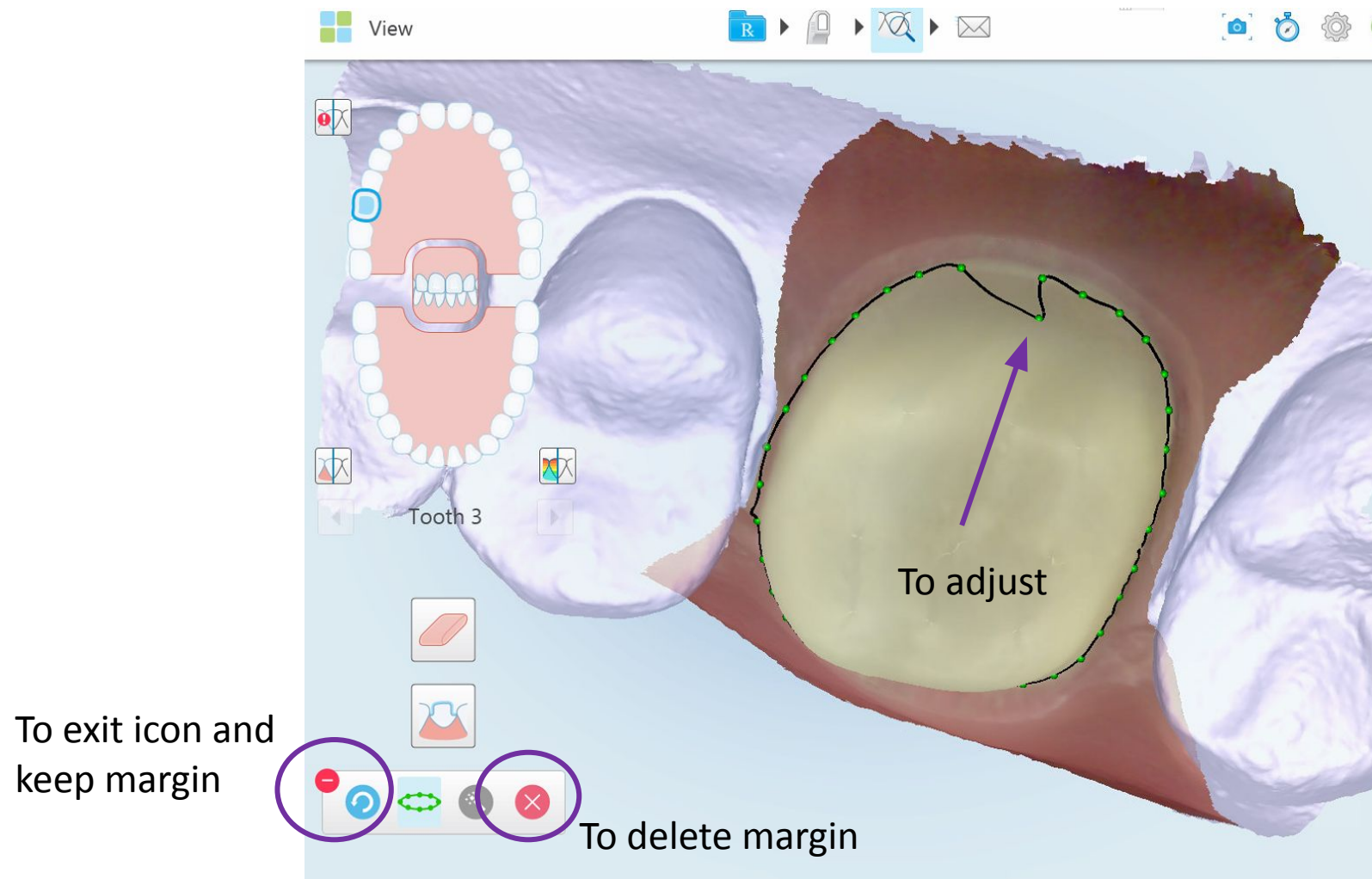


Click the margin marking tool to add an automatic margin



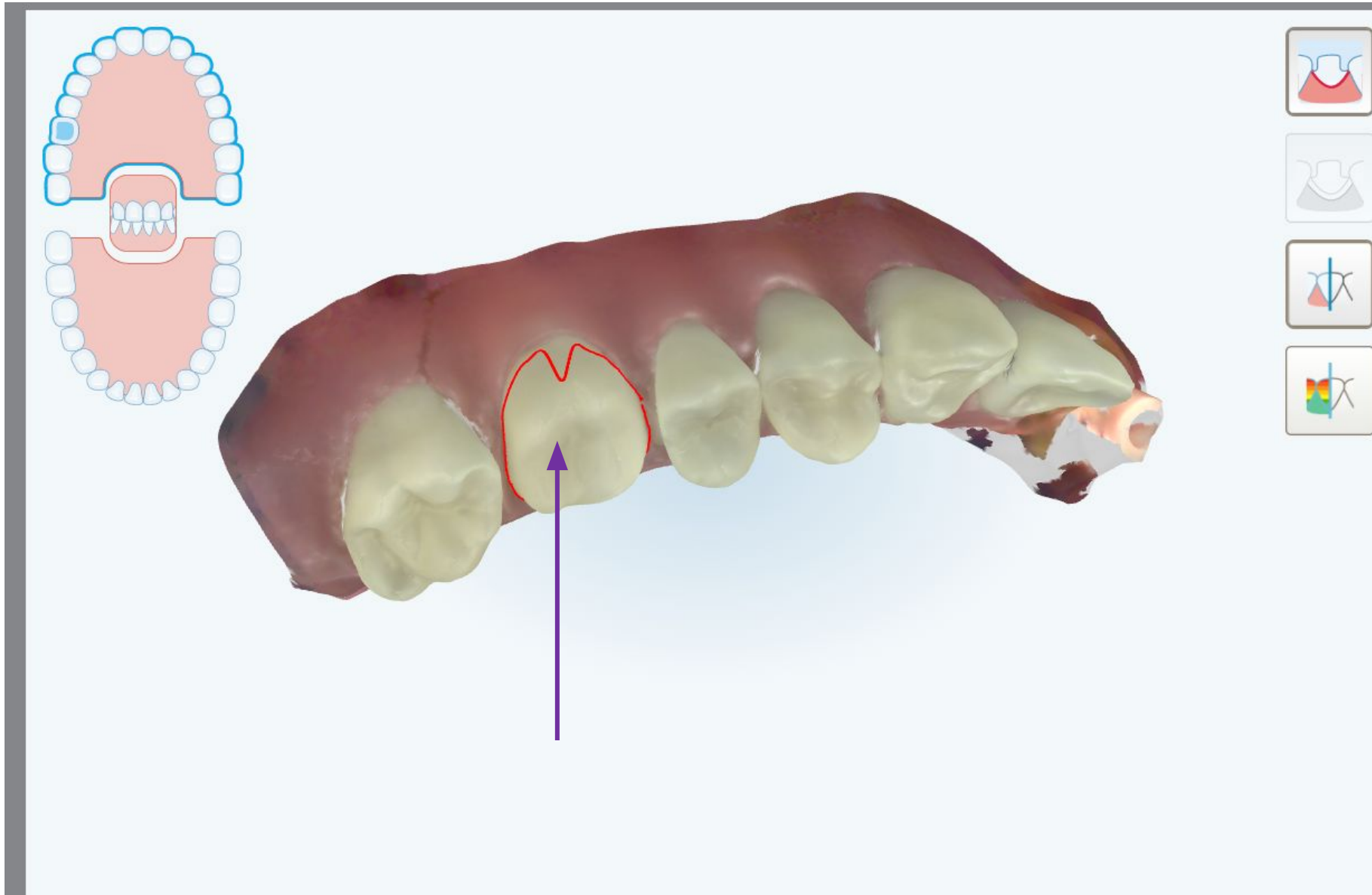
Once the margin has been detected a black line with green dots will appear





You can adjust the margin by moving the green dots. If you exit from this screen by clicking the red minus sign, the margin stays on the prep and will be sent to the lab or modeling. You will not see the margin once outside of the icon but it remains. To delete the margin, click on the red X. We are working on a warning system to notify the Drs that they are sending a margin.

Example of a bad margin marked or looked at by office and sent to lab



The image displays a 3D digital model of a maxillary dental arch. A red line is drawn along the gingival margin of the first premolar, indicating a 'bad margin'. A purple arrow points to this specific area. In the top-left corner, an inset shows a full-arch view with a blue box highlighting the region of the first premolar.

iTero Services

- ☐ Send to iTero Modeling
- ☐ Physical Model Order

No. of models
Including dies

Additional Dies
Per tooth

☐ Die Ditch

Notes (2) [Add](#)

- ≡ Please make a great crown
- ≡ Rescan request by lab. Reason: Margin Line Issues . Please mark your margin

Return case to doctor

Future updates for margin marking:

We will update the margin marking application to keep the margin visible if the red minus is clicked and we will add a warning for the Dr. prior to sending case.

We are also working to improve the accuracy of the margin marking AI.

