

# Implant Torque Specification Guide

Ensure you are applying the right amount of torque for your patient's implant restoration courtesy of R-Dent Lab.

*Have questions? Call us at **877.RDENT-4U**.*

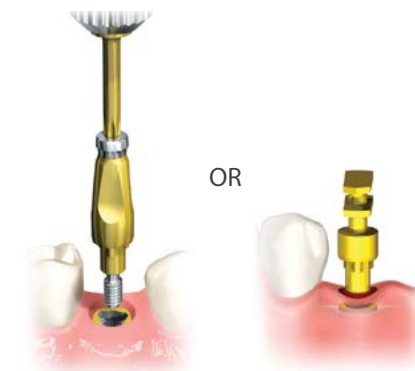
Manufacturer	Implant	Torque (Ncm)	Torque Settings	Driver & Head
BioHorizons	Internal 3.5, 4.5, 5.7	30 Ncm	0.050" (1.25 mm) Hex	●
	Tapered Internal 3.5, 4.5, 5.7	30 Ncm	0.050" (1.25 mm) Hex	●
	External Implant 3.5	30 Ncm	0.050" (1.25 mm) Hex	●
	External Implant 4.0, 5.0	30 Ncm	0.050" (1.25 mm) Hex	●
Biomet 3i	Certain™ 3.25, 4.0, 4/3, 5.0, 5/4, 6.0	20 Ncm	0.048" Hex	●
	Certain™ Prevail™ 3/4/3 (3.4), 4/5/4, 5/6/5, 4/3, 5/4, 6/5	20 Ncm	0.048" Hex	●
	Certain™ XP 4/5, 5/6	20 Ncm	0.048" Hex	●
	Miniplant™ 3.25	20 Ncm	0.048" Hex	●
	Osseotite™ 3.75, 4.0, 5.0, 6.0	20 Ncm	0.048" Hex	●
	Osseotite™ XP 4/5, 5/6	20 Ncm	0.048" Hex	●
Dentsply	ANKYLOS® C/X – C/ 3.5, 4.5, 5.5, 7.0 (non-indexed)	15 Ncm	1.0 mm Hex	●
	ANKYLOS® C/X – /X 3.5, 4.5, 5.5, 7.0 (indexed)	15 Ncm	1.0 mm Hex	●
	OsseoSpeed™ EV 3.0 – Green	25 Ncm	0.050" Hex	●
	OsseoSpeed™ EV 3.6 – Purple	25 Ncm	0.050" Hex	●
	OsseoSpeed™ EV 4.2 – Yellow	25 Ncm	0.050" Hex	●
	OsseoSpeed™ EV 4.8 – Blue	25 Ncm	0.050" Hex	●
	OsseoSpeed™ EV 5.4 – Brown	25 Ncm	0.050" Hex	●
	OsseoSpeed™ Profile EV 4.2 Yellow	25 Ncm	0.050" Hex	●
	OsseoSpeed™ Profile EV 4.8 Blue	25 Ncm	0.050" Hex	●
	OsseoSpeed™ / OsseoSpeed™ TX 3.0 – Yellow	15 Ncm	0.050" Hex	●
	OsseoSpeed™ / OsseoSpeed™ TX 3.5, 4.0 – Aqua	20 Ncm	0.050" Hex	●
	OsseoSpeed™ / OsseoSpeed™ TX 4.5, 5.0 – Lilac	25 Ncm	0.050" Hex	●
	OsseoSpeed™ 4.0 - Blue (Previous)	25 Ncm	0.050" Hex	●

## Impression Techniques - Closed Tray Instructions

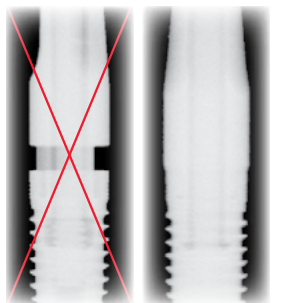
**Step 1**  
Remove healing abutment



**Step 2**  
Insert closed-tray coping—OR—  
Use plastic impression tray



**Step 3**  
Confirm proper seating



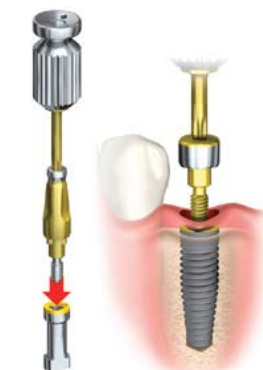
**Step 4**  
Block out driver indentation



**Step 5**  
Inject impression material



**Step 6**  
Replace healing abutment



**Step 7**  
Place replica in impression



Manufacturer	Implant	Torque (Ncm)	Torque Settings	Driver & Head
Dentsply Cont.				
	OsseoSpeed™ TX Profile 4.5, 5.0	25 Ncm	0.050" Hex	●
	XIVE® S 3.0	24 Ncm	1.22 mm Hex	●
	XIVE® S 3.4, 3.8, 4.5, 5.5	24 Ncm	1.22 mm Hex	●
	FRIALIT™ 3.4, 3.8, 4.5, 5.5	24 Ncm	1.22 mm Hex	●
*Nobel Biocare®				
	Angulated Screw Channel	35 Ncm	Nobel Biocare® Omnigrip	●
	NobelActive™ 3.0	15 Ncm	Nobel Biocare® Unigrip	★
	NobelActive™/NobelReplace™ Conical Connection NP 3.5	35 Ncm	Nobel Biocare® Unigrip	★
	NobelActive™/NobelReplace™ Conical Connection RP 4.3, 5.0	35 Ncm	Nobel Biocare® Unigrip	★
	NobelReplace™ NP 3.5	35 Ncm	Nobel Biocare® Unigrip	★
	NobelReplace™ RP 4.3	35 Ncm	Nobel Biocare® Unigrip	★
	NobelReplace™ WP 5.0	35 Ncm	Nobel Biocare® Unigrip	★
	NobelReplace™ 6.0	35 Ncm	Nobel Biocare® Unigrip	★
	Brånemark System™ NP 3.3	35 Ncm	Nobel Biocare® Unigrip	★
	Brånemark System™ RP 3.75, 4.0	35 Ncm	Nobel Biocare® Unigrip	★
	Brånemark System™ WP 5.0, 5.5	35 Ncm	Nobel Biocare® Unigrip	★
Straumann®				
	Bone Level 3.3 NC (Narrow CrossFit™)	35 Ncm	SCS Screwdriver	★
	Bone Level 4.1, 4.8 RC (Regular CrossFit™)	35 Ncm	SCS Screwdriver	★
	Standard/Standard Plus 4.8 RN (Regular Neck)	35 Ncm	SCS Screwdriver	★
	Standard/Standard Plus 4.8 WN (Wide Neck)	35 Ncm	SCS Screwdriver	★
	Standard Plus 3.3 NN (Narrow Neck)	35 Ncm	SCS Screwdriver	★
Zimmer Dental				
	Tapered Screw-Vent 3.5, 4.5, 5.7/ Tapered Screw-Vent 3.5, 4.5, 5.7 friction fit	30 Ncm	1.25 mm Hex	●
	Screw-Vent 3.3, 3.7, 4.5/ Screw-Vent 3.3, 3.7, 4.5 friction fit	35 Ncm	1.25 mm Hex	●
	SwissPlus™ 4.8	35 Ncm	1.25 mm Hex	●

\*Please note multi-unit abutments for 17° and 30° are 15 Ncm with a unigrip driver. Straight multi-units are 35 Ncm and utilize the multi-unit driver

## Implant Tool Loaner Program

It's difficult for any practice to maintain all the tools necessary to work on every platform. With our Implant Tool Loaner Program, now doctors are no longer limited in what they can prescribe and work on. R-Dent can provide the exact equipment you need to seat our abutments on any implant—at no additional cost!



Have questions? Call us at **877.RDENT-4U**.

## Impression Techniques - Open Tray Instructions

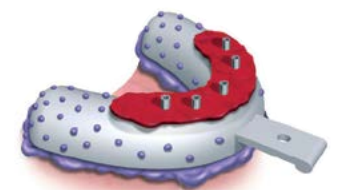
**Step 1**  
Remove Healing Abutment



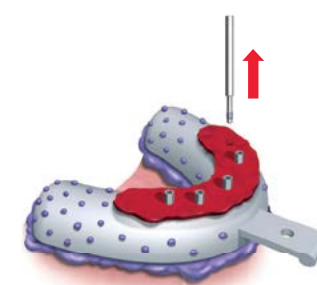
**Step 2**  
Place Open-tray Coping



**Step 3**  
Seat Tray Over Guide Pins



**Step 4**  
Unscrew Guide Pins



**Step 5**  
Replace Healing Abutment



**Step 6**  
Replace Guide Pins

